

# Fastener Inspection with real-time visual Feedback

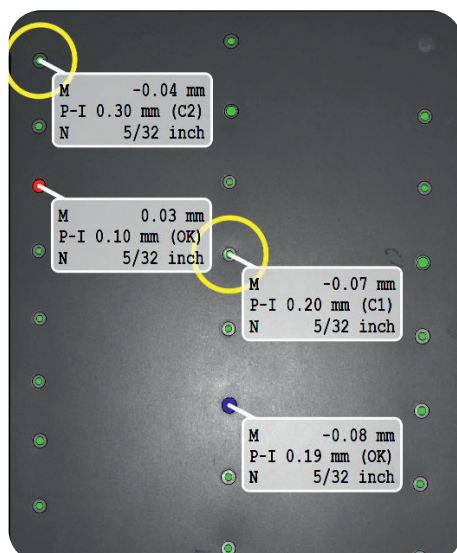


## WHAT IS IT?

fastCHECK is a revolutionary 3D surface inspection system that is amazingly easy to use – fast, simple and intuitive. It represents a ground-breaking approach to measuring fastener flushness – quickly, consistently and objectively.

## HOW DOES IT WORK?

fastCHECK delivers high-accuracy 3D measurement and analysis of fastener flushness and angle, at the push of a button. Real-time visualization of results is achieved by augmented reality (AR), which presents the measurement results directly on to the measurement surface.



**THE MEASUREMENT SURFACE  
BECOMES THE SCREEN™**

## WHAT ABOUT REPORTS?

Specifically tailored to the requirements of fastener and rivet inspection, fastCHECK delivers easy-to-understand analysis of fastener flushness. Designed to be a fully self-contained unit, fastCHECK is completely tetherless – no external computer, no external monitor and no cumbersome power-supply cables. fastCHECK is the first in a family of truly handheld portable, yet powerful, measurement analysis tools from 8tree.

**HIGH-PRECISION 3D FASTENER  
INSPECTION WAS NEVER SO EASY!**

## OPTICALLY MEASURES AND MARKS UP TO 30 FASTENERS IN 4 SECONDS

### Performance overview

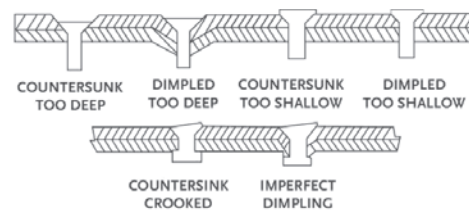
Field of View (FoV)		18 x 32 cm / 7 x 12.5"
Accuracy	Flushness Diameter	$\pm 12 \mu\text{m} / 0.0005''$ $\pm 1 \text{ mm} / 0.04''$
		} at 95% ( $2\sigma$ ) confidence interval
Acquisition Time		0.1 sec
Inspection Capability		30 fasteners at once
Measurement Speed		4 seconds
Battery Life		4.5 hours
Nominal Working Distance		$50 \pm 5 \text{ cm} / 20 \pm 2''$
Weight		4 kg / 8.8 lbs
Dimensions		35 x 30 x 9 cm / 14 x 12 x 4"

### fastCHECK SETS A NEW INDUSTRY BENCHMARK FOR:

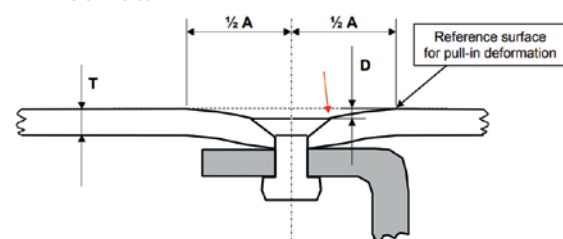
- ✓ **Speed:** 10x faster than current industry standard
- ✓ **Portability:** Lightweight, compact, battery-powered, integrated CPU. Easy to handle on the production floor.
- ✓ **Ease of Use:** Real-time visual feedback and intuitive user interface
- ✓ **Flexibility:**
  - Easily customized to different tolerance needs
  - Measurement results recorded in different formats
  - Scalable architecture enables new product configurations

### MEASUREMENTS INCLUDE:

- ✓ Fastener flushness at highest, lowest and mid point
- ✓ Angularity of fastener head



- ✓ Rivet Pull-In



8TR-BRO-011-015 Technical data are subject to change without notice.

#### 8TREE

Dallas, TX  
Kuala Lumpur, MY  
Constance, GER

+1 408 813 0969  
info@8-tree.com  
www.8-tree.com

#### FOLLOW US ON



@8tree

[www.youtube.com/user/8treefastCHECK](https://www.youtube.com/user/8treefastCHECK)



@8tree

[www.linkedin.com/company/8tree/](https://www.linkedin.com/company/8tree/)



@8tree2

[www.twitter.com/8tree2](https://www.twitter.com/8tree2)